

Jack and the Beanstalk 1917 Silent Movie in Chatsworth



Jack and the Beanstalk 1917 Silent Movie in Chatsworth

- This Presentation will document the filming of the 1917 silent movie Jack and the Beanstalk in today's Santa Susana Pass State Historic Park (SSPSHP), at the Miranda Homestead in Chatsworth.
- It encompasses four chapters:
 - Promotional photographs and identified filming locations of the movie, courtesy of Iverson Ranch and Chatsworth movie historian Dennis Liff.
 - A 1974 interview with Joe Bannon (son of the Chatsworth Park Quarry homesteader William Bannon), who played an integral part in the filming of the 1917 movie. He was interviewed by Jan Hinkston, who in 1970 founded the Santa Susana Mountain Park Association (SSMPA), which led to our current 670 acre SSPSHP in 1998.
 - The recent "rediscovery" of glass lantern slides from the Chatsworth Historical Society, made by Chatsworth Park School students circa 1917, of Jack and the Beanstalk.
 - A recently found 16 minute 4th reel of the previously lost movie, available from the Prelinger archives, that we will watch at the end of the presentation....

- The movie was a big production in 1917.
- The movie included the tallest man in the world, Jim Tarver, and a cast of children to represent the townspeople.
- Joe Bannon, who lived in Chatsworth at the time, recalled that “all of the kids in the area” turned out for the production.
- The producers put those kids in costumes and put them all in the movie, later declaring in ads for the film that the production included a cast of "1,300 children" — probably a bit of an exaggeration.



courtesy <http://iversonmovieranch.blogspot.com>

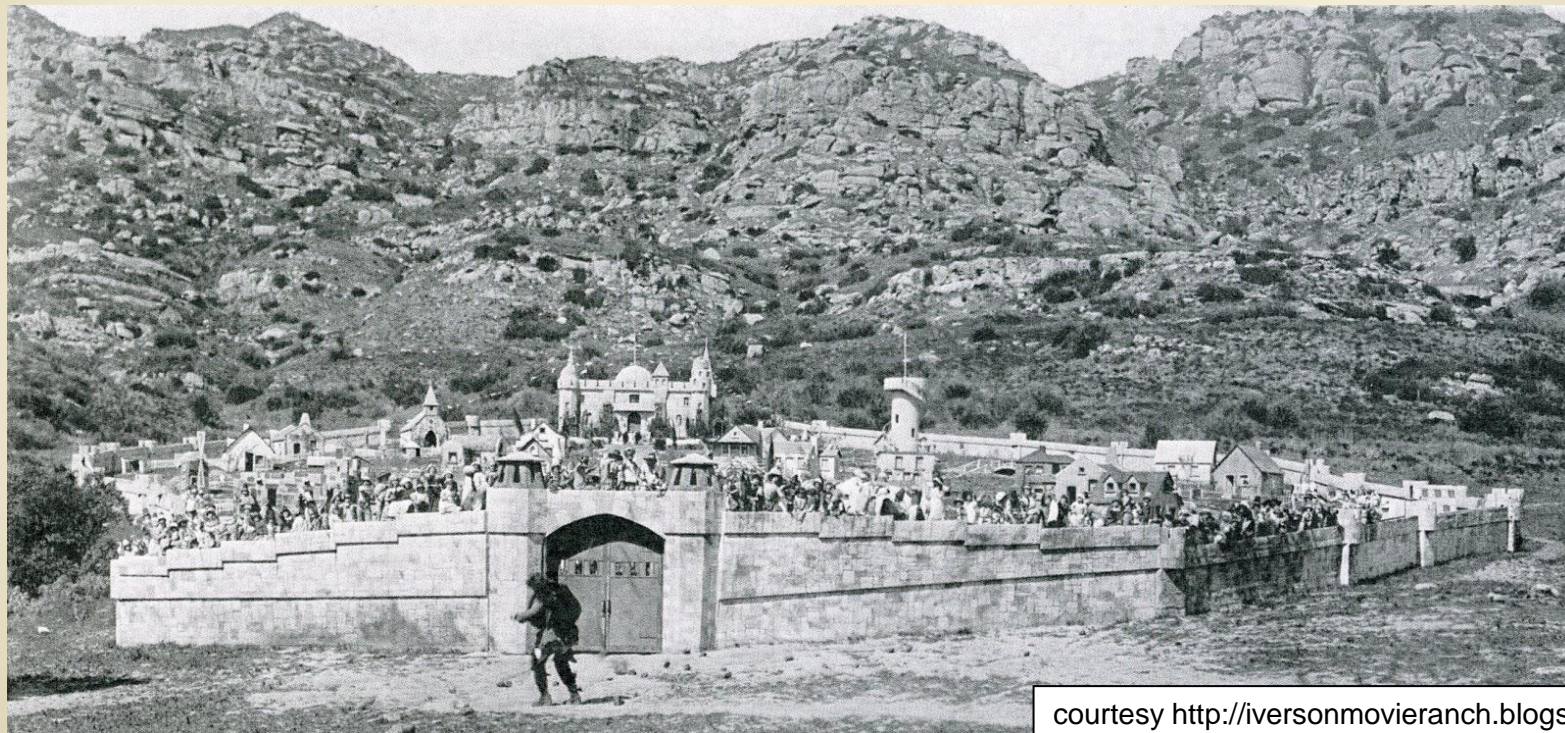
- The Giant was played by Jim G. Tarver, a real-life giant who stood anywhere from 7-foot-3 to 8-foot-6, depending on which hype you choose to believe.
- Tarver had just one film credit, in "Jack and the Beanstalk".



Promotional shot for the Ringling Bros. and Barnum & Bailey Circus side show
courtesy <http://iversonmovieranch.blogspot.com>

The Walled City Filming Location

- The story starts with a huge find by Dennis Liff, Iverson (and Chatsworth) movie historian, in August 2017. A stunning promotional still photograph of a 1917 movie set, featuring a massive walled city with a main castle in back....



courtesy <http://iversonmovieranch.blogspot.com>

The Walled City Filming Location

- A photograph of the SSPSHP taken in 2017 from the Andora trailhead facing west:



courtesy <http://iversonmovieranch.blogspot.com>

The Walled City Filming Location

- A photograph of the SSPSHP taken in 2017 from the Andora trailhead facing west:



courtesy <http://iversonmovieranch.blogspot.com>

The Walled City Filming Location

- The map to the right points you to the Andora trailhead, which is on Andora just south of Lassen Street and the Oakwood Memorial Park.
- Once you're there, head for the Miranda Loop Trail.
- Follow the trail marked in yellow. The "X" marks the vantage point where Dennis had the most luck trying to approximate the camera angle from the 1917 promo shot.



The False-Fronted Giant's Castle

- Promotional still photograph for "Jack and the Beanstalk," 1917: The Giant's castle, a separate set.
- The identification of the site where the walled city once stood is not the end of the story — there's also the matter of the Giant's castle, which was a separate set — and a fairly elaborate one.



courtesy <http://iversonmovieranch.blogspot.com>

The False-Fronted Giant's Castle

- In the movie the children sweep up the long staircases and invade the castle.
- In this screenshot they are approaching the staircases....



courtesy <http://iversonmovieranch.blogspot.com>

The False-Fronted Giant's Castle

- And in this screenshot they are storming up the staircases.....
- The invasion is part of the movie's climactic sequence, and the movie's producers did suit up a lot of kids for the occasion.



courtesy <http://iversonmovieranch.blogspot.com>

The False-Fronted Giant's Castle

- The Giant's castle location is much harder to access today than the Walled City filming site, but the rocks remain intact.



courtesy <http://iversonmovieranch.blogspot.com>



1917

The False-Fronted Giant's Castle

2017



The False-Fronted Giant's Castle



- The site of the Giant's castle is directly west of Lassen on a hilltop.
- Today there is a long driveway just south of the rocks, leading to the house commonly called "Eagles Nest".
- The driveway is marked with "no trespassing signs," even though technically the rocks may be located on park property.

The False-Fronted Giant's Castle



- A 3-Dimensional view of both sites from Google Earth.
- The Giant's Castle Site in Red, the Walled City Site in Blue.
- Notice that the Giant's Castle Site is directly west of Lassen.

The False-Fronted Giant's Castle

- And finally, the next time you are driving west on Lassen, notice the rocks where the Giant's Castle set was built.....
- Lassen looking west before Shoup



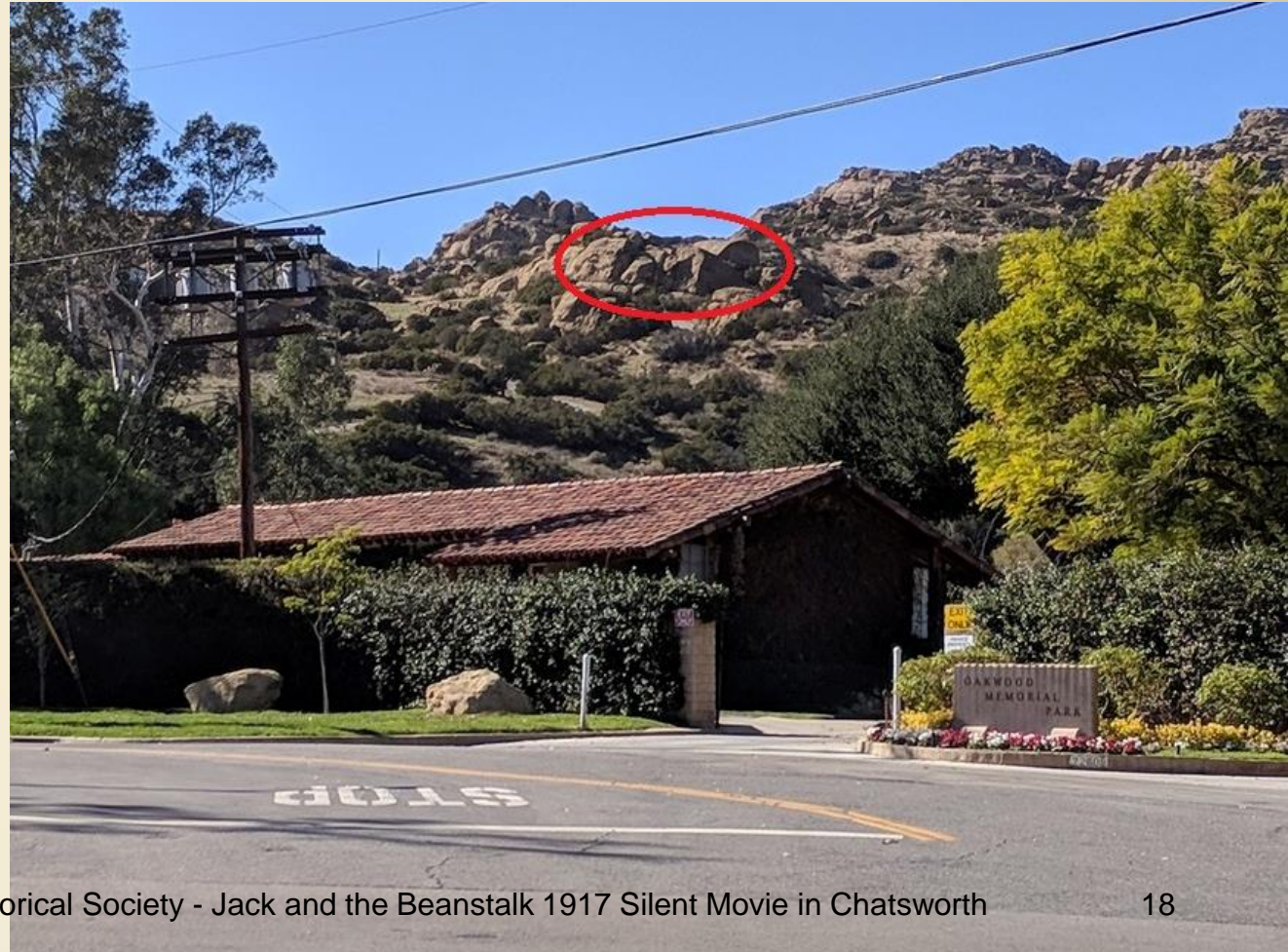
The False-Fronted Giant's Castle

- And finally, the next time you are driving west on Lassen, notice the rocks where the Giant's Castle set was built.....
- Lassen looking west before Baden



The False-Fronted Giant's Castle

- And finally, the next time you are driving west on Lassen, notice the rocks where the Giant's Castle set was built.....
- Lassen looking west before Oakwood Cemetery



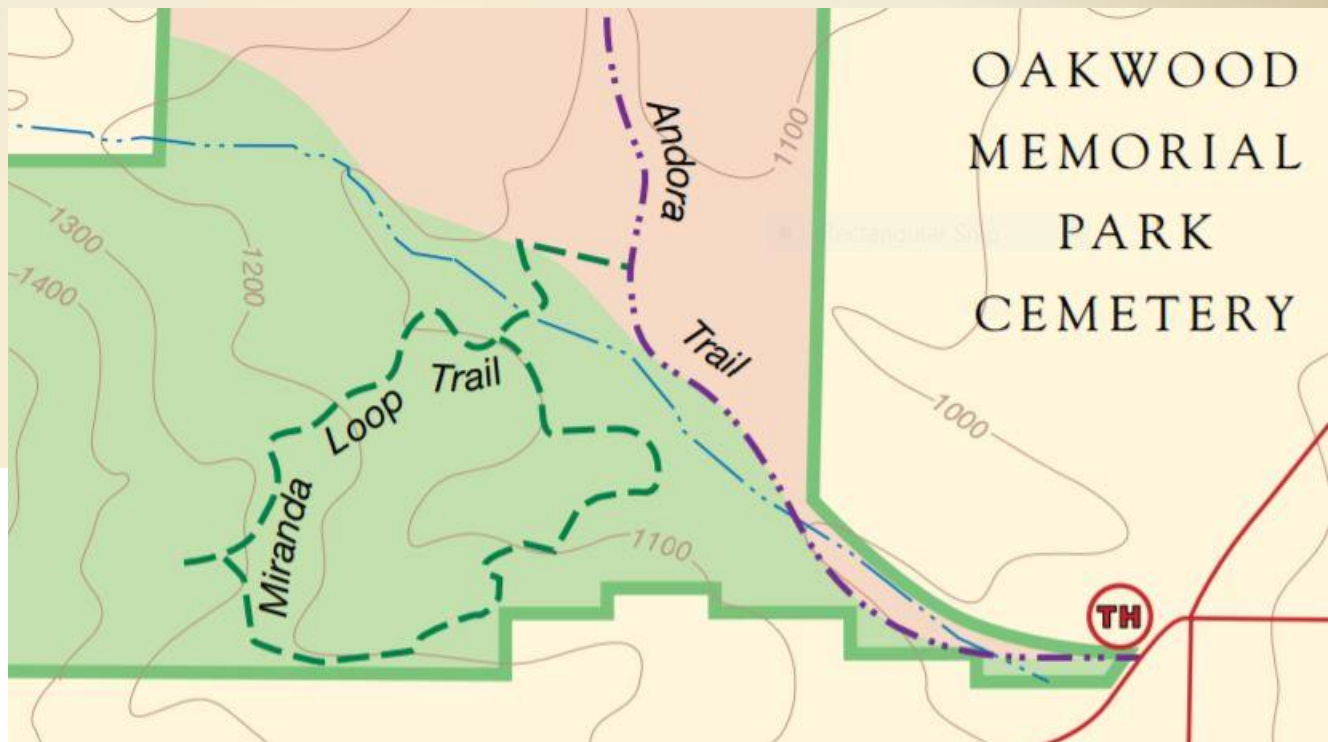
The False-Fronted Giant's Castle

- On Sunday 02/25/18, Join the SSPSHP volunteers for the Miranda Loop Hike.
- They will be passing just north of the Giant's Castle rock formation...

Difficulty Level: Difficult
Distance: 2.0 miles
Entrance: Andora Trailhead
Theme: Wildflowers
Hike Leader: Teena T. & Dottie A.

FREE AND OPEN TO THE PUBLIC!

Get to know your Santa Susana Pass State Historic Park! Join Teena and learn about the wildflowers and native plants in the Simi Hills on this slow-paced walk. It is labeled difficult because of the steep hill on the loop trail.



The False-Fronted Giant's Castle

- A second look at Baden and Lassen, from 1917....
- At the 1:59 minute:second mark of reel 4, Jack's army breaks open the Giant's castle gates to save the princess.
- In the upper right hand corner of this screenshot, notice Lassen turning south to Baden, indicating it was the major route to Chatsworth Lake and Valley Circle.



The False-Fronted Giant's Castle

- A 1928 UCSB aerial photograph confirms the previous identification of the Lassen and Baden intersection.
- In 1923, Oakwood Cemetery purchased the eastern portion of the Miranda Homestead.
- The Giant's Castle site is circle in red.



The Catapult Scene Location – just east of Castle Rocks, south of the road

- At the 4:48 minute:second mark of Part 4, Jack's army begins an assault on the Giant's Castle with archers and catapults.
- The long hill in the background seems to be Summit Ridge (screenshot at right)
- And this next screenshot shows the west edge of Summit Ridge, with the reservoir to the right.



The Catapult Scene Location – just east of Castle Rocks, south of the road

- That would place the Catapult Rocks just east of the Castle Rocks, and logically follows the flow of the movie, with rocks being launched at the Giant's Castle.



Joe Bannon Interview with Jan Hinkston

- Joseph Bannon (1902 – 1980) was the son of homesteader William Bannon (1842-1908), who in 1891 purchased the old adobe Stagecoach Waystation in today's SSPSHP. William Bannon was an experienced quarryman, established the Chatsworth Park Quarry, and sold dimension stone.
- The family sold the quarry and homestead in 1901 to the California Construction Company (the contractors on the San Pedro Breakwater), and moved to Texas.
- Joe Bannon was born one year later in Texas. In his interview, he mentioned that Southern Pacific Railroad engaged his father to go to Texas to open up some quarries for them.



Joe Bannon Interview with Jan Hinkston

- In 1906, William Bannon was called down to where the Colorado River had broken through into the Salton Sea. Southern Pacific hired him to blast rock that went into the levee used to redirect the runaway Colorado River back into it's channel.
- William Bannon returned from Texas in 1906 to direct quarrying operations for Oliver Charlton near Stoney Point. Oliver was the son of George Charlton, who homesteaded the 137 acres that include Stoney Point.
- William Bannon died in 1907 or 1908, and his wife Marie remarried in 1912 to William Morris, a road builder per the 1920 census.



VIRGINIA LEE CORBIN, JIM TARVER
FRANCIS CARPENTER IN "JACK
AND THE BEANSTALK"

Joe Bannon Interview with Jan Hinkston

- Marie and William Morris were living at the adobe Stagecoach Waystation in 1912-1919 (The old Bannon Homestead). During this time, her son Joe Bannon went to Chatsworth Park School, and experienced the filming of Jack and the Beanstalk at the Miranda's.
- In 1974, at the age of 72, Joseph Bannon gave an oral history to Jan Hinkston. One of his remembrances was the 1917 filming of Jack and the Beanstalk. Joe Bannon was 15 years old at the time....
- He had an amazing job on the set, which was to haul the giant up the hill to the Giant's Castle using a team of horses pulling a stone-boat.
- Reid Bogert of the Chatsworth Historical Society and SSMPA shared a copy of the audiotaped 1974 interview with us.
- We will now hear Joe's remembrances in his own words.....



Joe Bannon Interview with Jan Hinkston

- To listen to the 2 minute YouTube video of Joe Bannon talking about Jack and the Beanstalk with Jan Hinkston, go to

<https://www.youtube.com/watch?v=pUbfbfvvpes&t=4s>



Joe Bannon Interview with Jan Hinkston

JB: Interesting sidelight to that Miranda place. The first filming of Jack and the Beanstalk was done there and the little canyon back of their home was where the pygmy village was and the false-fronted castle was up on the hill on the left side of the entrance to the cemetery there.

I know because at the time they were filming it, all the kids in the area worked there. Some of them as pygmies.

My job was to drive a team pulling what they called a stone-boat - it's just a slab that they haul stone on.

I would haul the giant up that hill whenever they were going to film in the morning. He was huge - he was 8 foot 4. Jim Carver (**correct name: Tarver**). And weighed about 350 lbs.



VIRGINIA LEE CORBIN, JIM TARVER
FRANCIS CARPENTER IN "JACK
AND THE BEANSTALK"

Joe Bannon Interview with Jan Hinkston

JH: Was this a silent movie?

JB: Yes

JH: What year was it?

JB: Well, I was about 10 (**correct 15**) years old then, so that would be about 1912 (**correct 1917**). And little Jack of Jack and the Beanstalk and the little princess from the pygmy village - they were twins. They were beautiful, dolls, both of them.

JH: Do you recall their names?

Carpenter was their last name. But I don't recall what their first names were.



VIRGINIA LEE CORBIN, JIM TARVER
FRANCIS CARPENTER IN "JACK
AND THE BEANSTALK"

1917 circa Glass Lantern Slides



- In October 2017 we made a presentation on Glass Lantern Slides from our collections, that were donated to us by the Chatsworth Park Elementary School.
- Before slide projectors or PowerPoint, in 1865, the first lantern slide collections at museums and universities were started in the U.S. These 3¼" x 4" glass slides project clearly with great detail.
- As of 1922 (and no doubt earlier), The Los Angeles County School Visual Education Department is sending out one hundred boxes of lantern slides weekly to teachers.
- Our collection included some amazing historical photographs, but also some well preserved hand-painted slides of the children's fable Jack and the Beanstalk.

Jack and the Beanstalk hand-painted slides circa 1917 from Chatsworth Park Elementary

- When we opened up the Glass Lantern Slides box to look at the slides, we immediately noticed the 19 hand-painted slides, that told the story of Jack and the Beanstalk.
- We aren't sure exactly when they were made, but we are fairly certain that they were inspired by the filming of this silent movie filmed in Chatsworth 100 years ago.



Jack and the Beanstalk circa 1917
hand-painted slide 08

Jack going to the walled city

Jack and the Beanstalk hand-painted slides circa 1917 from Chatsworth Park Elementary

- In 1917, Chatsworth Park School was an elementary and middle school. Upon graduation, the students went to Canoga Park High School.
- It's probable that the teacher(s) asked the older students to make these slides of their memories of the movie event.
- We attempted to put the following slides in order of the well known Fairy Tale **Jack and the Beanstalk**. The slides weren't numbered or labeled so we did the best we could....



Jack and the Beanstalk circa 1917
hand-painted slide 08

Jack going to the walled city



Jack and the Beanstalk circa 1917
hand-painted slide 01

mother sending Jack off to sell the cow



Jack and the Beanstalk circa 1917
hand-painted slide 02

selling the cow



Jack and the Beanstalk circa 1917
hand-painted slide 03

Jack looking at the beans



Jack and the Beanstalk circa 1917
hand-painted slide 04

Jack planting the beans



Jack and the Beanstalk circa 1917
hand-painted slide 05

Jack sleeping



Jack and the Beanstalk circa 1917
hand-painted slide 06

Finding the beanstalk



Jack and the Beanstalk circa 1917
hand-painted slide 07

Jack climbing the beanstalk



Jack and the Beanstalk circa 1917
hand-painted slide 08

Jack going to the walled city



Jack and the Beanstalk circa 1917
hand-painted slide 09

Fairy telling Jack about the Giant and his
Castle on a hill



Jack and the Beanstalk circa 1917
hand-painted slide 10

Giant sleeping at the table



Jack and the Beanstalk circa 1917
hand-painted slide 11

Jack running from the Giant with the hen



Jack and the Beanstalk circa 1917
hand-painted slide 12

Jack climbs back up the beanstalk
to the Giant's castle



Jack and the Beanstalk circa 1917
hand-painted slide 13

Jack going to attack the Giant's castle



Jack and the Beanstalk circa 1917
hand-painted slide 14

Jack running from the beanstalk



Jack and the Beanstalk circa 1917
hand-painted slide 15

Jack chopping the beanstalk



Jack and the Beanstalk circa 1917
hand-painted slide 16

Giant starting to fall



Jack and the Beanstalk circa 1917
hand-painted slide 17

Giant falling



Jack and the Beanstalk circa 1917
hand-painted slide 18

Not sure what this one is.....



Jack and the Beanstalk circa 1917
hand-painted slide 19

Not sure what this one is.....

Sources/Acknowledgements

- Research by Dennis Liff in August 2017 as posted on his blogspot
<http://iversonmovieranch.blogspot.com/2017/08/jack-and-beanstalk-1917-when-children.html>
- Bison Archives' historical motion picture and Los Angeles Area photograph library
- Joseph Bannon audio tape, from Reid Bogert, CHS member. Also partially published in Santa Susana Pass State Historic Park Cultural Resources Inventory Historic Overview, March 2007, sspshp historic resources_adb.pdf
- Chatsworth Historical Society archives – Glass Lantern Slides
<http://www.chatsworthhistory.com/Presentations.html>, Glass Lantern Slides

Prepared by Ann & Ray Vincent, Chatsworth Historical Society, February 2018; revised for other links in 2022

1917 Jack and the Beanstalk -- A silent movie

Reel 4 – Part 4

To conclude this presentation, we will watch a recently discovered 16 minute 4th reel of the previously lost movie, available from the Prelinger archives.

The video has been posted on YouTube at
<https://www.youtube.com/watch?v=THmaqTDDA9Q&t=16s>

Or search on YouTube for “*1917 Jack and the Beanstalk Reel 4 Part 4*”

Jack and
the
Beanstalk

1917
silent
movie
previously
lost

The 16
minute
4th reel